



شركة التجارة والتسويق السعودية الدولية المحدودة
SAUDI INTERNATIONAL TRADING & MARKETING LTD.





شركة التجارة والتسويق السعودية الدولية المحدودة
SAUDI INTERNATIONAL TRADING & MARKETING LTD.

INTRO DUCTION

SAUDI INTERNATIONAL
TRADING & MARKETING COMPANY

SITML has evolved into its dynamic force over a period of 50 years of concentrated efforts and partnerships with diversified international conglomerates.

The company's operations range to various fields, such as aviation, manufacturing, trading, real estate, investment, insurance, communication, technical maintenance and construction defence.

However, SITML as we know it today has been officially incorporated in 1997, as a Limited Liability Company based in Saudi Arabia and owned by Late Sheik Abedlelah Kaki and family.



شركة التجارة والتسويق السعودية الدولية المحدودة
SAUDI INTERNATIONAL TRADING & MARKETING LTD.

SAUDI INTERNATIONAL
TRADING & MARKETING COMPANY

BUSINESS DIVI SION

SITML conducts business in Saudi Arabia, and internationally. Headquartered in Jeddah, it also has Office in Riyadh Dammam and Madina servicing the following departments





SITML SURVEY DIVISION



HEXAGON
GEOSYSTEMS

- when it has to be **right**

Leica
Geosystems

Total station, GPS GNSS, Levels, HDS, Detection and Mobile Mapping



Leica Pegasus TRK



Leica BLK 2GO



Leica BLK360 G2



Leica GS16 GPS



Leica DS2000



Leica BLK360



Ultra 1 Detection



Leica A20 Auto pole



TS13 Total Station



Leica BLK 2 FLY



Leica GS18 GPS



RTC 360 HDS



Authorized Distributor and Service Partner of Leica Geosystems AG

SITML is the Exclusive Authorized Distributor and Service Partner of Leica Geosystems AG in the Kingdom of Saudi Arabia. The Technical Division of the company manages the sales and marketing of Leica Geosystems' products, thus owning a majority of the market. With an operational presence of more than 50 years in the country via the owner's previous company A&M S. Kaki, the Division offers the most advanced, and industry leading technologies for Surveying, Precise Measurements, Detection and Automation, and High Definition Surveying (HDS) to surveyors, civil engineers, architects, and quality inspectors. Sales points cover all 3 major cities Jeddah, Riyadh and Dammam, as well as in Al Madinah Al Munawarah.

The Technical Division also maintains a well established training center, as well as Leica Geosystems Certified Workshops throughout the Kingdom in Jeddah, Riyadh, Dammam and Madinah.

Furthermore, this division deals with the setup and implementation of GNSS Reference Network projects including more than One hundred stations all over the Kingdom.

The Technical division is also included in the setup and Implementation of Structural Monitoring Solutions.



شركة التجارة والتسويق السعودية الدولية المحدودة
SAUDI INTERNATIONAL TRADING & MARKETING LTD.



SITML METROLOGY

DIVISION



Hexagon Metrology offers a comprehensive range of products and services for all industrial metrology applications in sectors as automotive, aerospace, energy and medical. Customers are supported with actionable measurement information along the complete life cycle of a product from development and design to production, assembly and final inspection.



Leica Laser Tracker



Hexagon CMM Machine



Hexagon Blue Light Scanner



Romer Absolute Arm





SITML METROLOGY

DIVISION



Fischer®

Founded in 1953, today we are the technology leader and your partner for precise and absolutely reliable measuring technology in the field of coating thickness measurement, material analysis, nanoindentation and material testing. With a wide range of products, from simple handheld devices for quick measurements on the go to fully integrated high-end systems that automatically monitor production, we offer measuring devices for numerous industries and applications. Always keeping up with the pulse of time and in search of innovation, we reinvent measuring technology every day - yesterday, right now, and in the future.



شركة التجارة والتسويق السعودية الدولية المحدودة
SAUDI INTERNATIONAL TRADING & MARKETING LTD.



SITML METROLOGY

DIVISION

Established in 1941 and headquartered in Renens, Switzerland, TESA manufactures and markets precision measuring instruments that stand for quality, reliability and longevity.

For more than 75 years, TESA has distinguished itself in the market through its excellent products, its unique expertise in micromechanics and precision machining as well as its proven experience in dimensional metrology.

The TESA brand is the global market leader in the field of height gauge and a pioneer thanks to its wide range of instruments, including callipers, micrometers, dial gauges, lever-type dial test indicators and inductive probes. TESA is a true benchmark for the inspection of incoming goods, as well as production workshops and quality assurance laboratories.

Through its worldwide distribution network the company focuses on the mechanical engineering, micromechanical, automotive aerospace, machine and medical industries. In 2001, TESA became part of Hexagon, a leading global provider of information technologies.



DIGITAL
CALIPER



MICROMETER



TESA TESAST LEVELER



TESA-HITE Plus Height Gauge

SITML RAILWAY

DIVISION

Amberg GRP System FX is the proven, universal system solution for acquiring precise track geometry and track environment data. Thanks to the modular design, the surveying system can be optimally adapted to suit individual requirements. The system is easy to transport, allowing surveying to be easily integrated in railway construction processes.

Slab Track	Ballast Track (Tamping)	Mapping (Survey)	Clearance
<ul style="list-style-type: none"> Construction survey (set-out) As-built documentation Track geometry assessment Maintenance survey 	<ul style="list-style-type: none"> Topographic (design) survey Construction survey – Tamping machine guidance documentation Track geometry assessment Maintenance survey 	<ul style="list-style-type: none"> Topographic route survey 	<ul style="list-style-type: none"> Profile measurements Construction survey (set-out, control) documentation Clearance & structure gauging Variant studies



High Speed Railways



Industrial Railways



Urban Rail/ Metro





SITML MAINTENANCE & CALIBRATION CENTRE

Maintenance and Calibration Centre

**SITML Leica Geosystems
Authorized Maintenance Centre,
Dammam**



**SITML Leica Geosystems
Authorized Maintenance Centre,
Jeddah**



**SITML Leica Geosystems
Authorized Maintenance Centre,
Riyadh**



Our Current Clients





ISO Certification

To provide our customers with high quality and standards in Wholesale and retail in surveying and electromechanical device and their maintenance and their accessories as per ISO 9001:2015 requirements to meet their needs & exceed their expectation.

Our quality policy and objectives are always reviewed in Management review meetings and are communicated with all our employees to ensure consistency with company activities.

We are continually seeking to improve the level of services relying on our skilled staff which are our most valuable assets.

Late Abedlelah M. Kaki
Chairman

IssueNo.1/O

Issue Date: 2020-07-09



شركة التجارة والتسويق السعودية الدولية المحدودة
SAUDI INTERNATIONAL TRADING & MARKETING LTD.



SITML Leica Geosystems
Prince Nasser Bin
Abdulaziz St, Al 'Adamah,
Dammam 32242



SITML Leica Geosystems
Al Washm Street, Square
Road Riyadh 12631



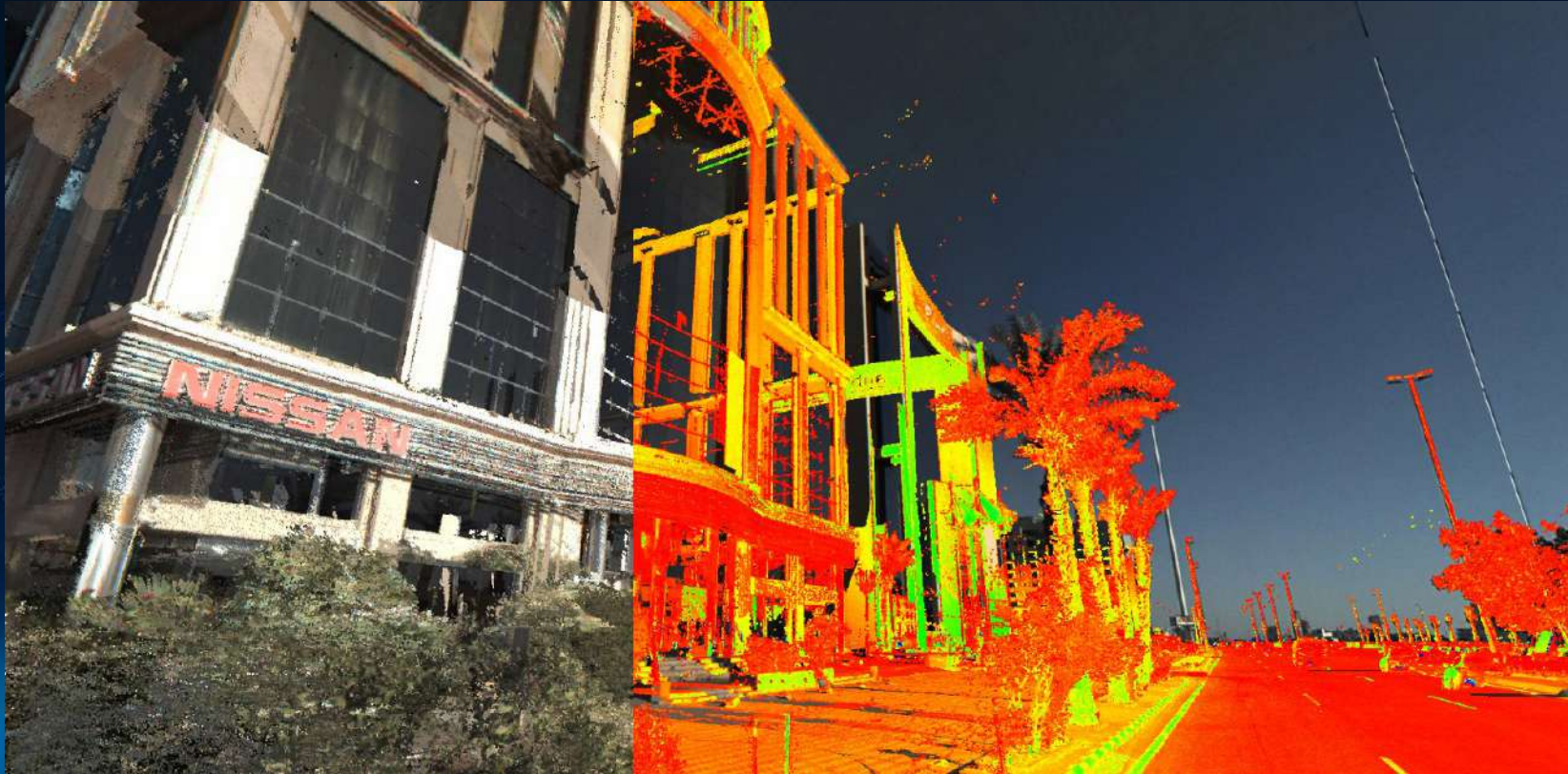
SITML Leica Geosystems
Ibrahim Al Tasan,
Mishrifah Jeddah 23332



Adh Dhahirah, Madina
Abdullah Bin Saad Al Zahri,
3317 Phone (+966 12
8287875)



SITML



Red Sea Plaza, 6765 Al Andalus Street, Al-Ruwais,
Jeddah 23213, Saudi Arabia



شركة التجارة والتسويق السعودية الدولية المحدودة
SAUDI INTERNATIONAL TRADING & MARKETING LTD.